

"Fenn" Heavy Duty High Speed Finishing Mill

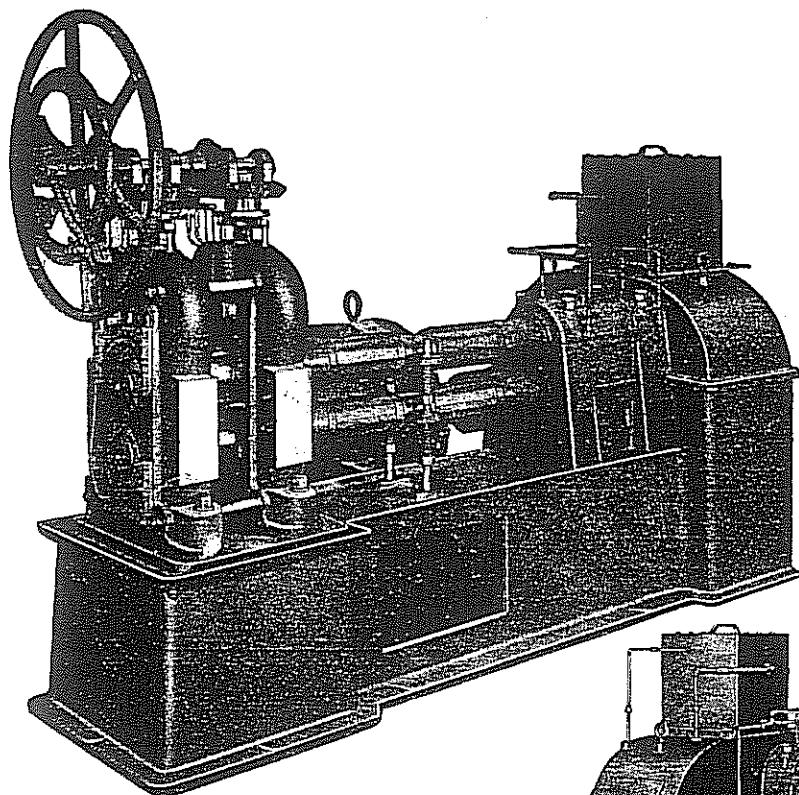


Fig. 4 - FRONT VIEW
No. 092

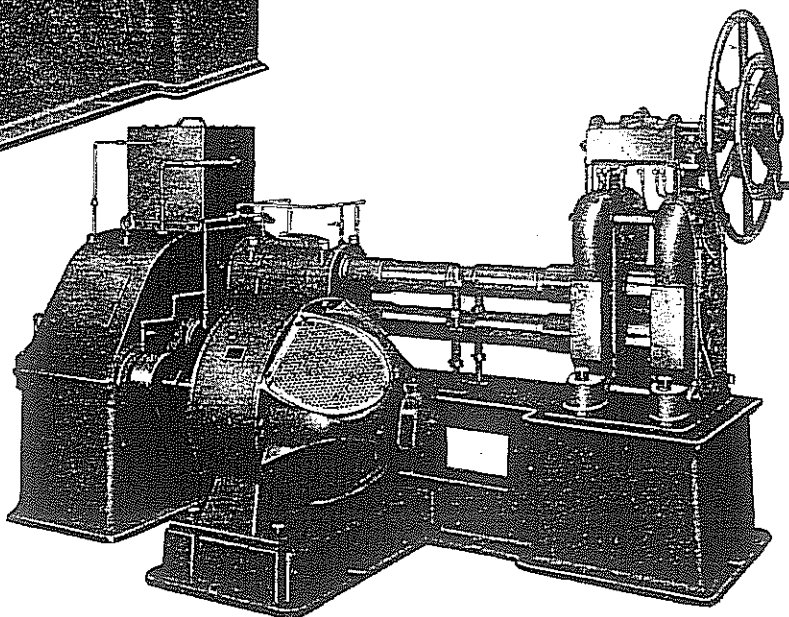


Fig. 5 - BACK VIEW
No. 092

Used for high speed rolling and sizing of coiled strip high carbon steel, and non-ferrous alloys—also for forming nut and bolt stock from rod. Can be arranged for tandem operation with edgers and guides. Gears fully enclosed and running in oil. Pressure lubrication and filter attachment for protection of drive gears and bearings. Independent handwheel roll adjustment for each roll can be synchronized after setting for dual control.

| No. of Machine | 072 | 092 | 102 |
|--|--------------------------------|--------------------------------|--------------------------------|
| Diameter of Rolls | 7 ¹ / ₄ | 9 | 10 ³ / ₄ |
| Face Width, Standard | 8 | 9 | 12 |
| Diameter of Journal | 4 ¹ / ₂ | 6 ¹ / ₈ | 7 ¹ / ₈ |
| Floor to Top of Bottom Roll | 40 ⁷ / ₈ | 41 ³ / ₄ | 36 ¹ / ₄ |
| Section Each Housing (square inches) | 62 | 82 | 160 |
| Gear Reduction to Suit Rolling Speeds | | | |
| Motor-Horsepower (regular) | 20 | 60 | 75 |
| Weight Net, Without Motor (lbs.) | 13,500 | 15,000 | 26,000 |
| Weight Domestic Shipment, Without Motor (lbs.) | 14,000 | 15,500 | 26,800 |
| Weight Foreign Shipment, Without Motor (lbs) | 14,500 | 16,000 | 27,500 |
| Floor Space R to L x F to B | 125x72 | 142x72 | 142x85 |
| Size of Case for Export | 135x82x80 | 152x82x85 | 152x95x85 |
| Code Word | AGUIL | AGOTT | ADOKA |

ROLLING MILL COMPARATIVE SPECIFICATIONS

| SERIES | MODEL | TYPE | DIAMETERS | | | | MAX. SEP. FORCE AT 100 fpm | EACH COLUMN SECTION | TOTAL COLUMN AREA | EST. WEIGHT | EST FLOOR SPACE+ |
|--------|-------|------|------------|---------------|--------------|--------|----------------------------|---------------------|-------------------|-------------|------------------|
| | | | WORK ROLLS | BACK-UP ROLLS | ROLL JOURNAL | | | | | | |
| 20 | 201 | 2H | 20 1/2 | - | 15 | | 2,250,000 | 15 3/4 x 17 1/2 | 1180 | 170,000 | 125 x 210 |
| | 4-201 | 4H | 6 1/2 | 20 1/2 | 4 1/2 | 12 1/4 | 1,500,000 | 13 1/4 x 14 3/4 | 781 | 150,000 | 125 x 210 |
| | 4-205 | CB | 6 1/2 | 20 1/2 | 4 1/2 | 15 | 2,250,000 | 15 3/4 x 17 1/2 | 1180 | 190,000 | 125 x 210 |
| 18 | 181 | 2H | 18 1/2 | - | 13 3/4 | | 1,835,000 | 14 3/4 x 16 1/2 | 973 | 130,000 | 90 x 178 |
| | 4-181 | 4H | 5 5/8 | 18 1/2 | 4 | 10 3/4 | 1,175,000 | 11 5/8 x 13 1/8 | 610 | 115,000 | 90 x 202 1/2 |
| | 4-185 | CB | 5 5/8 | 18 1/2 | 4 | 13 3/4 | 1,835,000 | 14 3/4 x 16 1/2 | 973 | 145,000 | 90 x 202 1/2 |
| 16 | 161 | 2H | 16 1/2 | - | 12 1/4 | | 1,500,000 | 13 1/4 x 14 3/4 | 781 | 100,000 | 84 x 161 3/4 |
| | 4-161 | 4H | 5 | 16 1/2 | 3 1/2 | 9 | 840,000 | 9 7/8 x 11 1/4 | 444 | 85,000 | 84 x 180 |
| | 4-165 | CB | 5 | 16 1/2 | 3 1/2 | 12 1/4 | 1,500,000 | 13 1/4 x 14 3/4 | 781 | 110,000 | 84 x 180 |
| 14 | 141 | 2H | 14 1/2 | - | 10 3/4 | | 1,175,000 | 11 3/8 x 13 1/8 | 610 | 75,000 | 76 x 141 1/2 |
| | 4-141 | 4H | 4 3/8 | 14 1/2 | 3 1/8 | 9 | 840,000 | 9 7/8 x 11 1/4 | 444 | 65,000 | 76 x 163 |
| | 4-145 | CB | 4 3/8 | 14 1/2 | 3 1/8 | 10 3/4 | 1,175,000 | 11 3/8 x 13 1/8 | 610 | 95,000 | 76 x 163 |
| 12 | 121 | 2H | 12 1/2 | - | 9 | | 840,000 | 9 7/8 x 11 1/4 | 444 | 57,000 | 64 x 121 5/8 |
| | 4-121 | 4H | 3 3/4 | 12 1/2 | 2 3/4 | 7 1/2 | 550,000 | 8 3/8 x 9 1/2 | 318 | 50,000 | 64 x 138 3/8 |
| | 4-125 | CB | 3 3/4 | 12 1/2 | 2 3/4 | 9 | 840,000 | 9 7/8 x 11 1/4 | 444 | 72,000 | 64 x 138 3/8 |
| 10 | 101 | 2H | 10 1/2 | - | 7 1/2 | | 550,000 | 8 3/8 x 9 1/2 | 318 | 35,000 | 56 x 103 3/8 |
| | 4-101 | 4H | 3 1/4 | 10 1/2 | 2 1/4 | 6 | 300,000 | 7 x 8 1/8 | 227 | 30,000 | 56 x 124 3/4 |
| | 4-105 | CB | 3 1/4 | 10 1/2 | 2 1/4 | 7 1/2 | 550,000 | 8 3/8 x 9 1/2 | 318 | 45,000 | 56 x 124 3/4 |
| 8 | 081 | 2H | 8 3/8 | - | 6 | | 300,000 | 7 x 8 1/8 | 227 | 14,000 | 48 x 85 1/2 |
| | 4-081 | 4H | 2 1/2 | 8 3/8 | 1 3/4 | 6 | 300,000 | 7 x 8 1/8 | 227 | 13,000 | 48 x 96 1/4 |
| | 4-085 | CB | 2 1/2 | 8 3/8 | 1 3/4 | 6 | 300,000 | 7 x 8 1/8 | 227 | 13,000 | 48 x 96 1/4 |
| 6 | 061 | 2H | 6 1/4 | - | 4 | | 150,000 | 5 7/8 x 5 7/8 | 138 | 8,000 | 41 1/2 x 80 |
| | 4-061 | 4H | 1 7/8 | 6 1/4 | 1 1/4 | 4 | 150,000 | 5 7/8 x 5 7/8 | 138 | 9,000 | 41 1/2 x 80 |
| | 4-065 | CB | 1 7/8 | 6 1/4 | 1 1/4 | 4 | 150,000 | 5 7/8 x 5 7/8 | 138 | 9,000 | 41 1/2 x 80 |
| 5 | 051 | 2H | 5 1/4 | - | 3 3/8 | | 100,000 | 4 7/8 x 5 | 97 | 5,000 | 34 1/2 x 69 1/2 |
| | 4-051 | 4H | 1 3/8 | 5 1/4 | 1 | 3 3/8 | 100,000 | 4 7/8 x 5 | 97 | 6,000 | 34 1/2 x 69 1/2 |
| | 4-055 | CB | 1 3/8 | 5 1/4 | 1 | 3 3/8 | 100,000 | 4 7/8 x 5 | 97 | 6,000 | 34 1/2 x 69 1/2 |
| 4 | 041 | 2H | 4 1/4 | - | 2 3/4 | | 60,000 | 4 X 4 | 64 | 3,000 | 32 X 58 5/8 |
| | 4-041 | 4H | 1 1/4 | 4 1/4 | 3/4 | 2 3/4 | 60,000 | 4 X 4 | 64 | 3,000 | 32 X 58 5/8 |
| | 4-045 | CB | 1 1/4 | 4 1/4 | 3/4 | 2 3/4 | 60,000 | 4 X 4 | 64 | 3,000 | 32 X 58 5/8 |
| 3 | 031 | 2H | 3 1/4 | - | 2 1/4 | | 35,000 | 3 X 3 | 36 | 2,000 | 28 1/2 X 42 |
| | 4-031 | 4H | 1 | 3 1/4 | 1/16 | 2 1/4 | 35,000 | 3 X 3 | 36 | 2,200 | 28 1/2 X 46 |
| | 4-035 | CB | 1 | 3 1/4 | 1/16 | 2 1/4 | 35,000 | 3 X 3 | 36 | 2,200 | 28 1/2 X 46 |

*2-H = Two-High

4-H = Four-High, Work Roll Driven

CB = Combination, Two-High/Four-High, Back-Up Roll Driven

+ Without drive

NOTE: THE ABOVE ROLLING MILL SPECIFICATIONS ARE FOR OUR STANDARD MILL SIZES. FENN MANUFACTURING ALSO OFFERS COMPLETE CUSTOM DESIGN CAPABILITIES TO MEET OUR CUSTOMER'S PRECISE REQUIREMENTS. LARGER ROLLING MILLS CAPABLE OF 3,000,000 LBS. SEPARATING FORCE OR GREATER ARE ALSO AVAILABLE.